

DATE: March 16, 2018

SUBJECT: **Addendum No. 1**  
Union County Public Schools  
Walkway Canopy Projects

FROM: Ramsay Burgin Smith Architects, Inc.  
225 North Main Street - Suite 501  
Salisbury, NC 28144

**General:** Information contained in this Addendum and changes directed in Drawings and/or Project Manual supersede said Documents and become part of the Contract. Receipt of this addendum must be acknowledged on the bid Form of Proposal.

**All Contractors,** General and subcontractors should review all Addenda Items for work that pertains to or affects their trade.

**BIDDING REQUIREMENTS:**

**ITEM #01: PREBID MEETING:**

The requirement for **mandatory attendance** by bidding contractors at the Prebid meeting **has been waived**.

**ARCHITECTURAL SPECIFICATIONS:**

**ITEM #02: Reference Specification SECTION 10730 – ALUMINUM WALKWAY COVERS:**

In addition to those already listed, and **subject to compliance with specified requirements**, including performance and finish, products by the following manufacturer(s) may be used for this project:

Mitchell Metals, Inc.  
Smyrna, GA 30080

**ARCHITECTURAL DRAWINGS:**

**ITEM #03: Reference Drawing Sheets A1.1 SITE PLAN; A2.1 – ENLARGED PLAN:**

Bus canopy section at Indian Trail Elementary School is revised and entrance canopy added as shown on attached Bulletin Drawing ABD1.

**ITEM #04: Reference Drawing Sheet A1.3 DEMOLITION PLAN:**

**Clarification:** Previous testing revealed asbestos containing materials on walkway covers at Parkwood High School and asbestos abatement will be done under a separate contract with the Owner. Asbestos was found in the roofing materials on the existing walkway cover at canopy “D”, which will be abated and completely demolished prior to start of new canopy construction. The single conduit on this walkway cover will be temporarily shored. Asbestos was limited to the caulking around the gutters on the existing walkway cover at Canopy “B” and abatement contract work will only include removing the caulking and gutters.

**ITEM #05: Reference A8.3-01 CANOPY SECTION:**

**Clarification:** Detailed hanger layout is typical and shall be provided throughout for canopies A, C and G. Actual piping and conduit at each location may vary, but hanger layout allows future piping or conduit to be added.

**Note:** All threaded rods, nuts, and clevis hangers shall be stainless steel.

**ITEM #06: Reference A7-02 – CANOPY SECTION; A8.3-05 – CANOPY SECTION:**

Height to bottom of deck beam for bus canopy overhang shall be **14’-0” minimum** for truck clearance.

**ITEM #07: Reference A7-01 – CANOPY SECTION:**

Note regarding canopy roof shall be revised to read: “CANOPY OVERHANG SHALL NOT EXTEND PAST BACK EDGE OF CURB”.

**ITEM #08: Reference A8.3-10 CANOPY DETAIL – Emergency Scuppers:**

Location of emergency scuppers are noted as 24 feet o.c. but shall be coordinated with the Owner on site to avoid placement of scuppers at undesirable locations.

**ELECTRICAL DRAWINGS:**

**ITEM #09: Reference Drawing Sheet E2.1, CANOPY LIGHTING PLAN:**

Canopy light fixture quantity and layout shall be adjusted per Architectural Bulletin Drawing ABD1. Add a net total of three (3) light fixtures, including one (1) shown per ABD1-02 for suspended canopy. Power suspended canopy fixture to spare circuit via PE cell per plan note 1.

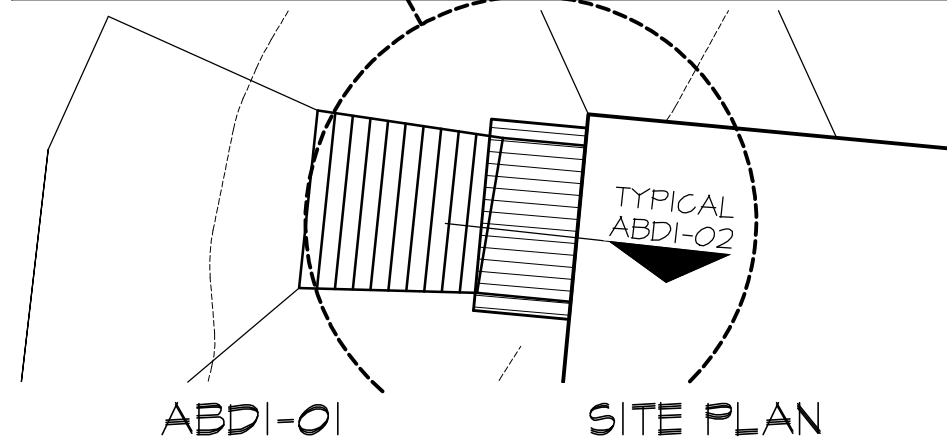
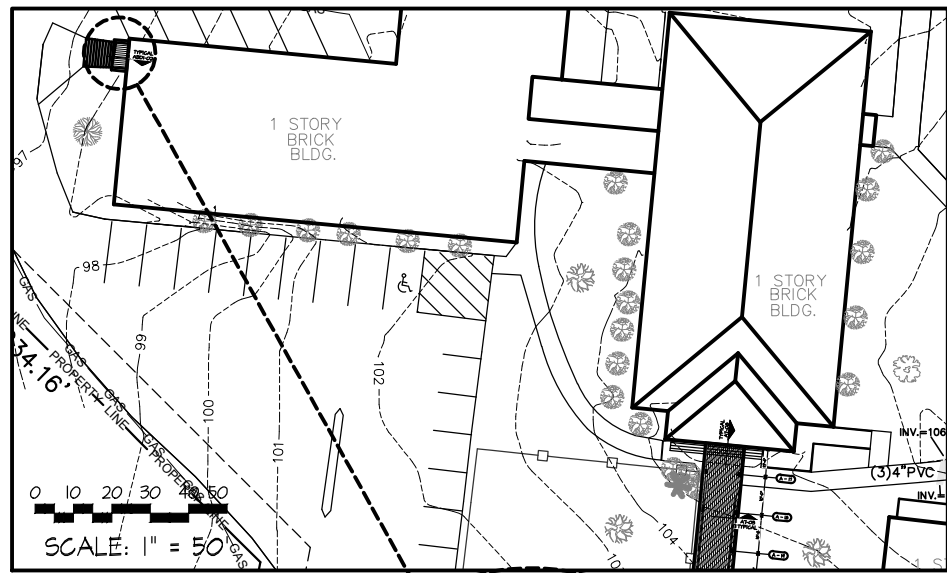
**ATTACHMENTS:**

**Bulletin Drawing (1 page):**

ABD1 – Revised Canopy Plan/Detail

**Addendum + Attachments = 3 pages**

**END OF ADDENDUM No. 1**

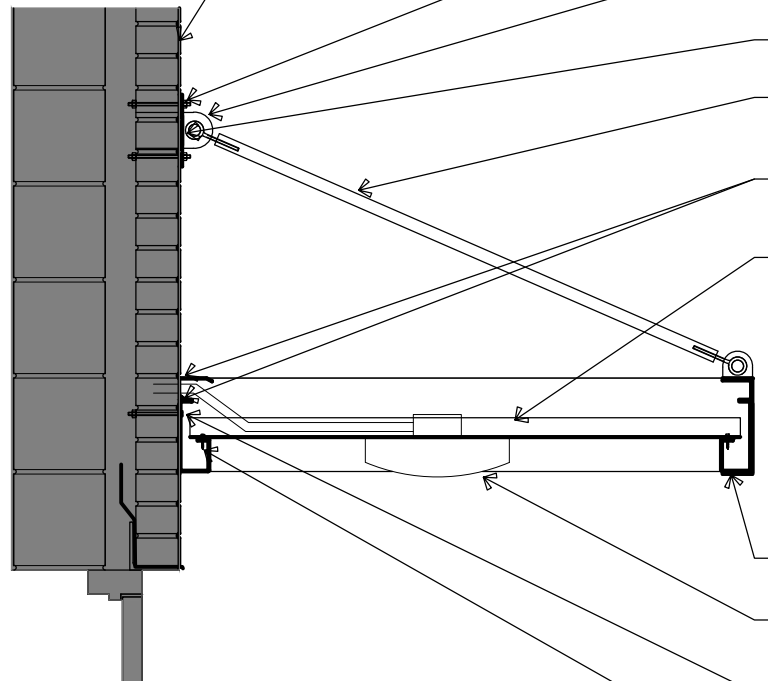


ABDI-01

SITE PLAN

SCALE: 1/8" = 1'-0"

SUPPORT AND SECURE NEW CANOPY TO EXISTING WALL AS REQUIRED



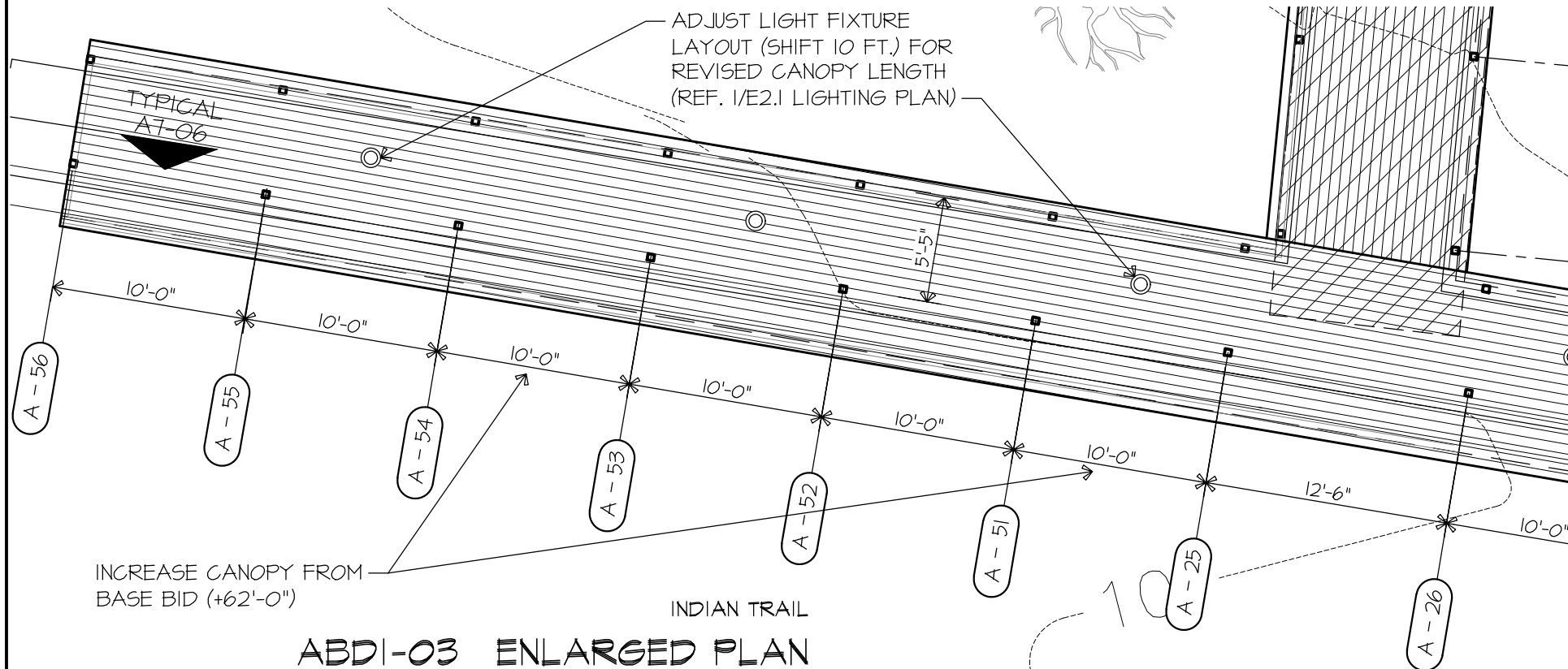
CANOPY BODY ALUMINUM: COMPLETE ASSEMBLY, INCLUDING FASCIA AND INTEGRATED PERIMETER GUTTER WITH SCUPPERS. TYPICAL WHITE ALUMINUM FINISH.

ABDI-02

- SECURE W/ HOT DIPPED GALVANIZED STEEL BOLTS AS REQUIRED - WHITE FINISH
- USE DECORATIVE ALUMINUM SQUARE WALL BRACKET PLATE AT MASONRY VENEER LOCATIONS. - WHITE FINISH
- PIN/ BOLT - WHITE FINISH
- ALUMINUM HANGER RODS W/ ADJUSTABLE ENDS - WHITE FINISH
- MIN. 8" LAP UP WALL .040 ALUMINUM CONTINUOUS FLASHING W/ DRIP EDGE - SEALANT (CONTINUOUS)
- ALUMINUM DECKING - EXTRUDED ALUMINUM DECKED W/ INTERLOCKING PANS WHICH APPEAR FLUSH WHEN VIEWED FROM BENEATH. (SAME AS MAIN CANOPY)
- 4'-0" x 8'-0" CANOPY - MATCH MAIN CANOPY PROFILE +/- 1"
- COORDINATE MOUNTING HEIGHT W/ ARCH.
- ADD DRAIN POINTS AS DIRECTED
- WEATHER PROOF, BOX, LIGHT FIXTURE, RIGID CONDUIT TYP. ON TOP OF CANOPY - SEE LED LIGHTING ALTERNATE
- SECURE W/ HOT DIPPED GALVANIZED STEEL BOLTS AS REQUIRED - WHITE FINISH
- SS FASTENERS W/ NEOPRENE WASHERS

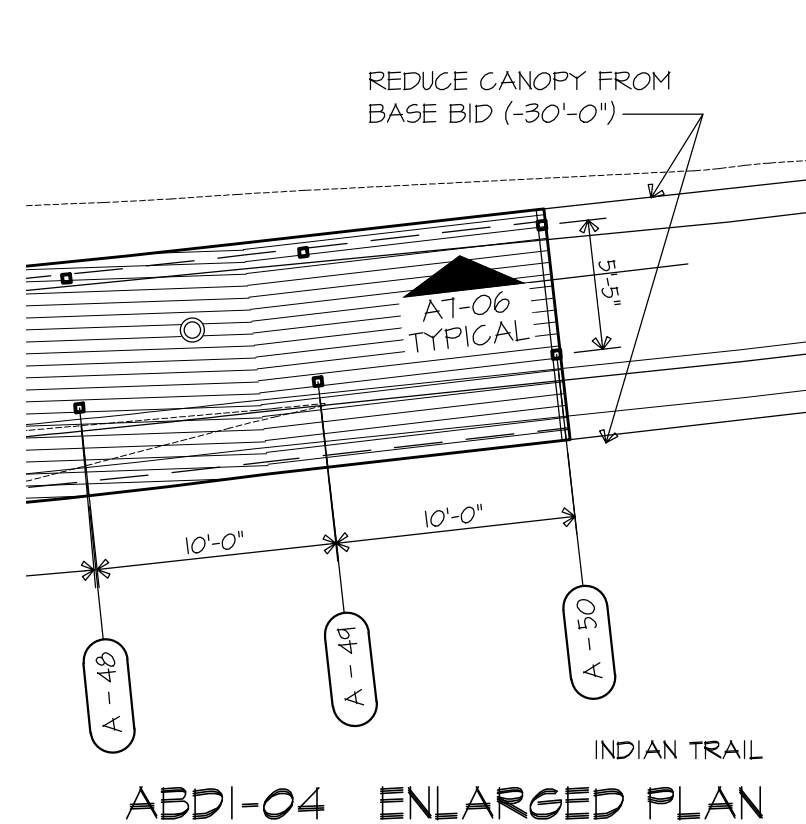
CANOPY DETAIL

SCALE: 3/4" = 1'-0"



ABDI-03 ENLARGED PLAN

SCALE: 1/8" = 1'-0"



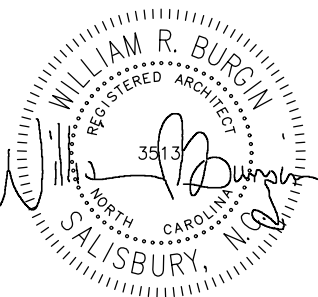
ABDI-04 ENLARGED PLAN

SCALE: 1/8" = 1'-0"

INDIAN TRAIL ELEMENTARY

**BULLETIN  
DRAWING**

PARTIAL A2.1 ENLARGED PLAN  
CANOPY DETAIL



**UNION COUNTY  
PUBLIC SCHOOLS  
2018 CANOPIES**