

May 11, 2017

SUBJECT: Addendum Number 2
Old St. Paul's Evangelical Lutheran Church
Narthex Addition

FROM: Ramsay Burgin Smith Architects, Inc.
225 North Main Street - Suite 501
Salisbury, NC

Information contained in this Addendum and changes in Drawings and/or Specifications supersede said documents and become part of the Contract. Contractors are reminded to acknowledge receipt of this addendum on the bid Form of Proposal.

NOTE BID DATE CHANGE!!!!

Bids due by 5:00pm Tuesday, May 16, 2017 @ Old St. Paul's Evangelical Lutheran Church Assembly Room. (location of prebid conference)

Catawba County Building Services code review comments have been received and are incorporated in this addendum.

GENERAL:

Item 1 - Reference Sheet A2 : On the Finish Schedule, Change the wood ROOF in the title to ROOM!

ARCHITECTURAL:

Item 2 - Reference Specification Section 09300 – Tile and the Room Finish Schedule drawn on 5/ A2:

12" x 24" floor tile is being used in lieu of the 12" x 18" called in the Room Finish Schedule as "F1" since Dal Tile "Portfolio Colorbody" porcelain tile isn't available in 12" x 18". The joints of the tiles are staggered on tile centers between rows. See the Tile pattern illustrated on the bottom of ABD2.1.

Item 3 - Reference Specification Section – 08305 – Access Doors

Provide one 16" x 16" 1 hour rated white powder coated steel ceiling access door in Women's toilet 101 to access the water valve located above the ceiling. Provide J.L. Industries (or equal) model FD/1 hour rated for wall board flange with screw turn latch. See bulletin drawings ABD2.1 – Partial Reflected Ceiling plan for location and see the reference to the access door (by G.C.) in the plumbing addendum items.

Item 4 - Reference Sheet C1 – Site Plan and Planting List

See Bulletin drawing ABD1.1 - Note that 2 plants were added to the lower side of the new building addition to act a screen for the three mechanical units bringing the total number of Korean Boxwoods on the Plant Schedule to 11.

Item 5 - Reference Sheet A3 Elevation 3/A3:- South Elevation

See Bulletin drawing ABD3.1 that shows the attic exhaust fan (by M.C.) relocated at least 4 feet away from the firewall. The revised bulletin drawing shows the fan more correctly drawn without a tall turbine.

Item 6 - Reference Sheet A6: Wall Sections- the Left Sheet Side Wall Section .

Reference the wall section at the firewall. At the top of this section where the 8" and 12" CMU abuts the belfry tower and the adjacent existing building roof, a fire and smoke stop needs to be installed according to the Building Official utilizing a UL rated joint detail for 3 hour wall. We cannot find a U.L. detail for that specific condition. For bidding purposes, we have revised the two circular enlargement details at the top of the sheet to show a sealed up joint utilizing firesafing stuffing, a "Z" shaped 16 gage metal shield applied against the 6"x 6" x 5/16" angle (see 7/S1.20) with firecaulking sealing the top and bottom edges of the shield edges to the firerated roof deck and the CMU firewall.

See Bulletin ABD4.1. This protection detail is provided and installed across the entire roof width. Should a different solution be found that is satisfy the Building Inspector we will settle up any difference in cost with the GC.

Please note that we changed the 2x blockings to Fire Treated lumber on both sides of the firewall..

PLUMBING:

Item 7 - FIRE RATED WALLS: (Second Reminder)

Plumbing contractor to review the fire rated walls (1 hr& 3 hours) indicated on the Life Safety Plan on sheet 1/A1 and plan to protect any duct or piping penetrations (if any) thru these walls with an rating appropriate U.L. compliant penetration protection detail.

Note all ceilings are 1 hour rated and all penetrations must be firecaulked and sealed with UL listed protection details.

Item 8 - Sheet P1 – Plumbing Plans

Changed callout for ceiling access panel to read, "16X16 1-HR RATED ACCESS PANEL BY G.C." as illustrated in bulletin drawing PBD1.1.

Item 9 - Sheet P2 – Schedules and Details

Changed lavatory faucets to battery operated metering faucets as illustrated in bulletin drawing PBD1.2.

MECHANICAL:

Item 10 - FIRE RATED WALLS: (Second reminder)

Mechanical contractor to review the fire rated walls (1 hr& 3 hours) indicated on the Life Safety Plan on sheet 1/A1 and plan to protect duct or piping penetrations thru these walls with an rating appropriate U.L. compliant penetration protection detail.

Note also all ceilings are 1 hour rated and all penetrations must be protected with fire dampers per UL details.

Item 11 - Reference Sheet M1 – Mechanical Floor Plans

Detail 5: Relocated Fan VF-1 to move it at least 4 feet from the 3-hour wall as illustrated in bulletin drawing MBD1.1.

Detail 5: Relocated supply diffuser serving Vestibule 100 to clear device from rated assembly as illustrated in bulletin drawing MBD1.1. (This was described in the previous Addendum#1 as Item 10)

Detail 2: Added radiation dampers at ceiling diffusers and ceiling exhaust fans in Women 101 and Men 103 as illustrated in bulletin drawings MBD1.2 and MBD1.3.

Item 12 - Reference Sheet M2 – Mechanical Schedules and Specs

Changed HP-1 from a 13 SEER unit to a 14 SEER unit as illustrated in bulletin drawing MBD1.3

ELECTRICAL:

Item 13 - Drawing E2 & E4 (Panel N)

Change HP-1 from 3 phase to single phase. Use circuit N 18,21 with a 2 pole 30 amp breaker and #10 wire. Fuse at disconnect with 25 amp fuse.

Item 14 - Drawing E2

Move VF-1 as shown on Mechanical addendum. (4 feet away from the fire wall)

See Note 1: Clarifying that Magnetic Door Holders provided by the E.C. are tripped for closure by the smoke detectors contained within the Firemark Rixson door closers on Sanctuary Doors 108. Hardware is provided by GC, functional and operational connections to door holders by E.C.

Provide 24 volt DC power supply for the Von Duprin 99EO series fire exit devices to the HM door jambs, and to the Rixson Firemark smoke detector closers at the heads of the sanctuary doors for an integrated door release system upon detection of smoke on either the doors.

Item 15 - FIRE RATED WALLS (First reminder)

Electrical contractor is reminded to notice the fire rated walls (1 hr & 3 hours) indicated on Sheet E2/E3 Power, Lighting, and Attic plans to protect electrical penetrations thru these walls with an rating appropriate U.L. compliant penetration protection detail.

Note also all ceilings are 1 hour rated and all penetrations must be protected per UL penetration protection details.

Note that 3hr CMU fire wall has ¾" wood furring and 5/8" gyp.bd. installed over rated wall. Provide shallow device boxes if required to avoid breaching rated wall with conduit or box depth. MC cable may be used in this instance at the firewall.

Item 16 - Conduits for wire and cabling:

Electrical contractor shall provide rigid EMT conduit as specified on the drawings for bidding purposes except where allowed for use in wall furred at firewall.

Item 17 - Drawing E-1, E-2 and E4

Drawing E-1 note C, E-2 and E-4

Upsize feeder, disconnect, fuses and main breaker for Panel N from 125A to 200A. Change feeder to 1 (4 # 3/0, 1 # 6, 2"C). Add 2-50 amp 2 pole (#8 wire to condensing units) and one 30 amp 2 pole (10 wire to air handlers) breakers in panel N to re-feed the existing relocated Sanctuary units and re-feed the existing air handling units located in attic shown on E-2.

ATTACHMENTS:

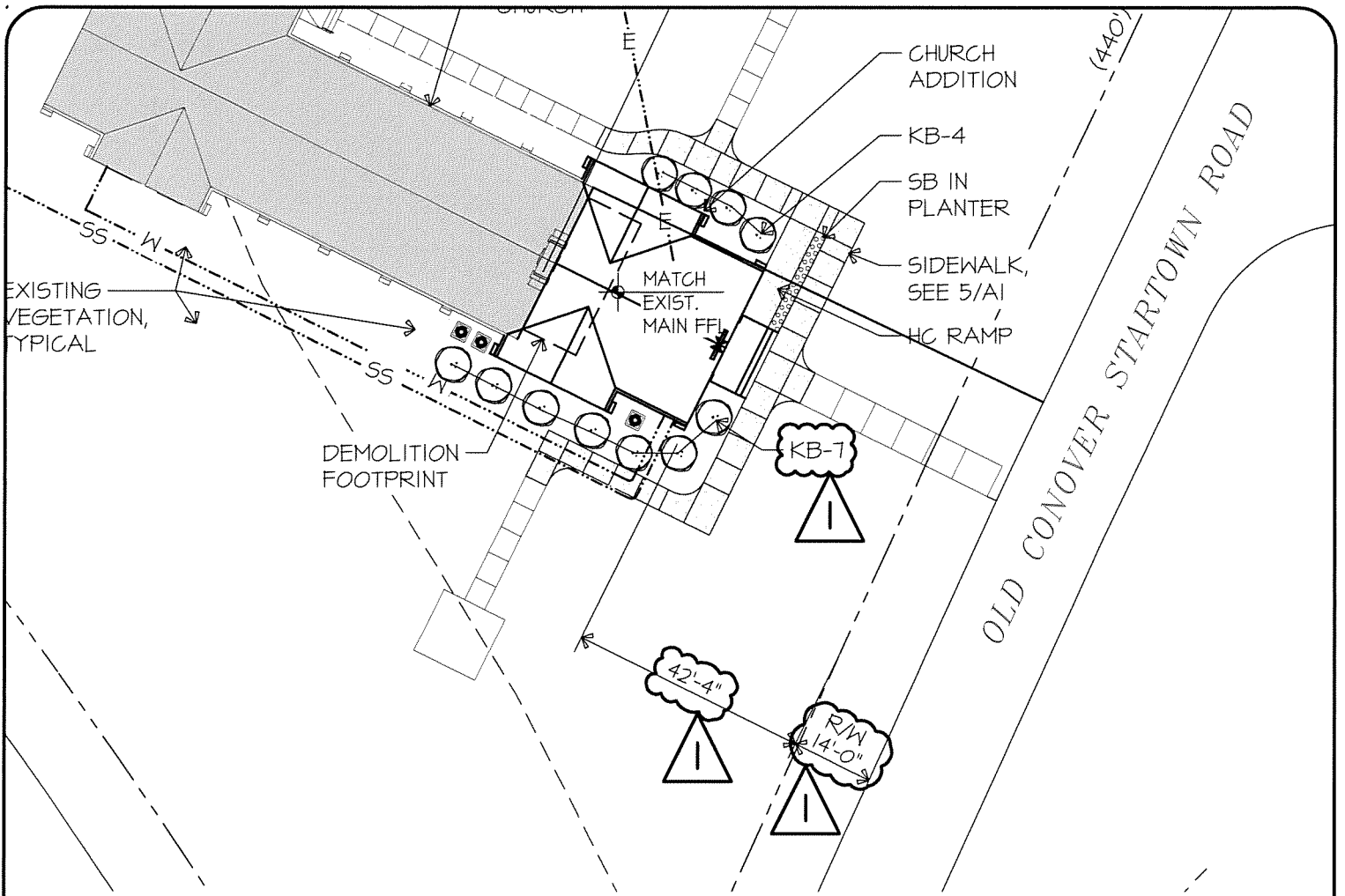
4 Sheets: ABD1.1; ABD2.1; ABD3.1; ABD4.1 (Architectural Bulletins)

2 Sheets: PBD1.1; PBD1.2 (Plumbing Bulletins)

3 Sheets: MBD1.1; MBD1.2; MBD1.3 (Mechanical Bulletins)

13 Sheets Total: Addenda including attachments.

End of Addendum Number 2



PLANT LIST

SYMBOL	ABBREV.	NO.	BOTANICAL NAME	COMMON NAME	SIZE	SPACING/REMARKS
 SHRUBS	KB		BUXUS SINICA VAR. INSULARIS (OR MATCH EXISTING)	KOREAN BOXWOOD (OR MATCH EXISTING)	5 GALLON	AS SHOWN
PLANTER 2'-0"x 18'-0"	SB	AS REQ'D	OPHIPOGON JABURAN VITTATA	SNAKEBEARD	6" CONTAINER	2 ROWS- 16" O.C. STAGGERED
DISTURBED AREA AROUND CONSTRUCTION	LAWN	"LAWN"	FESTUCA ARUNDINACEA	REBEL II OR FALCON FESCUE GRASS		LAWN ALL AREAS DISTURBED BY CONSTRUCTION.

**RAMSAY
BURGIN
SMITH
ARCHITECTS**

225 NORTH MAIN STREET - SUITE 501
SALISBURY, NORTH CAROLINA 27144
Phone: (704) 633-9121 Fax: (704) 633-9561
Email: rbsa@rbsarch.com (www.rbsarch.com)

PUBLICATION OR REUSE OF THESE DRAWINGS
OR ANY DETAILS THEREFROM MUST BE WITH
THE WRITTEN CONSENT OF THE ARCHITECT

Old St. Paul's Church Narthex Addition A1 Site Plan

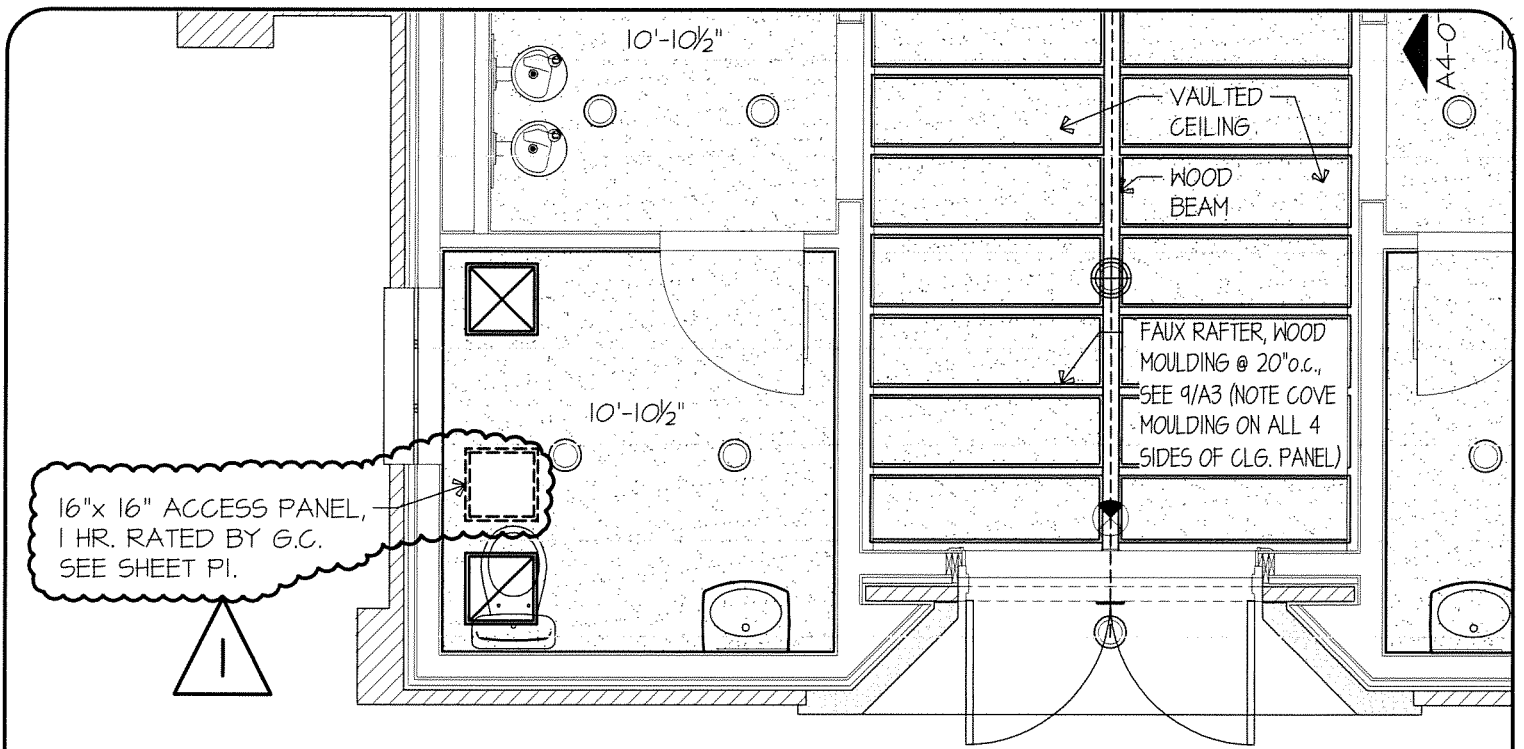
ADDENDUM No.2
BULLETIN DRAWING

LLS _____
DRAWN BY
DSS _____
CHECKED BY
MAY 11, 2017 _____
DATE
S1527 _____
COMM. NO.

SHEET NO.

ABD | |

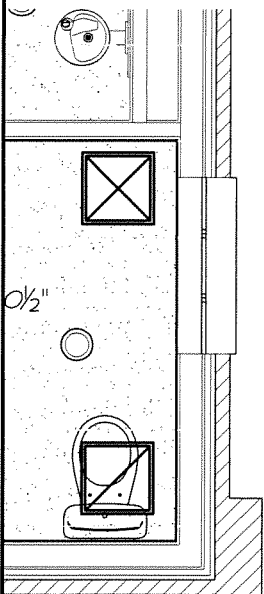
OF



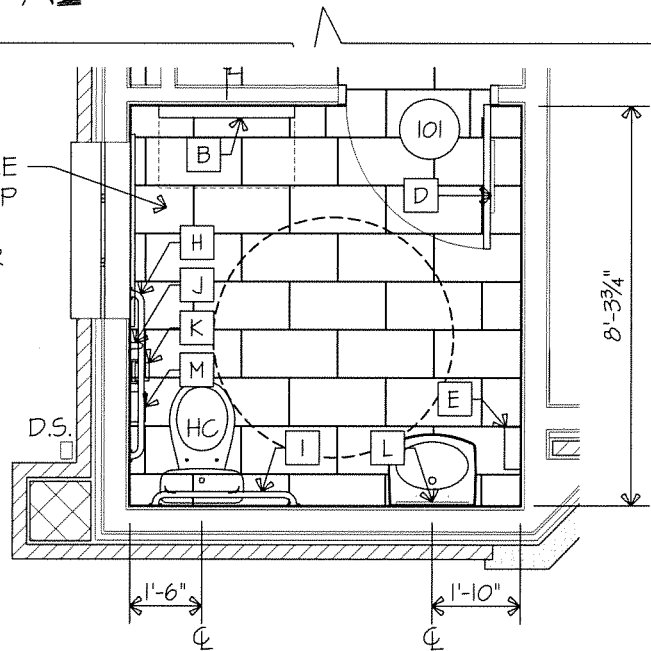
4 REFLECTED CEILING PLAN

A2

SCALE: 1/4" = 1'-0"



1 PORCELAIN TILE
12"x 24" LINE UP
EVERY OTHER
WALL & FLOOR
TILE JOINT



WOMEN'S ROOM 101, MEN'S ROOM 103 MIRROR IMAGE (NO ITEM M)

5 DETAILED TOILET PLAN

A2

SCALE: 1/4" = 1'-0"

RAMSAY
BURGIN
SMITH
ARCHITECTS

225 NORTH MAIN STREET - SUITE 501
SALISBURY, NORTH CAROLINA 27144
Phone: (704) 633-3121 Fax: (704) 633-3361
Email: rbsa@rbsarch.com (www.rbsarch.com)

PUBLICATION OR REUSE OF THESE DRAWINGS
OR ANY DETAILS THEREFROM MUST BE WITH
THE WRITTEN CONSENT OF THE ARCHITECT

Old St. Paul's Church
Narthex Addition
A2 Plans

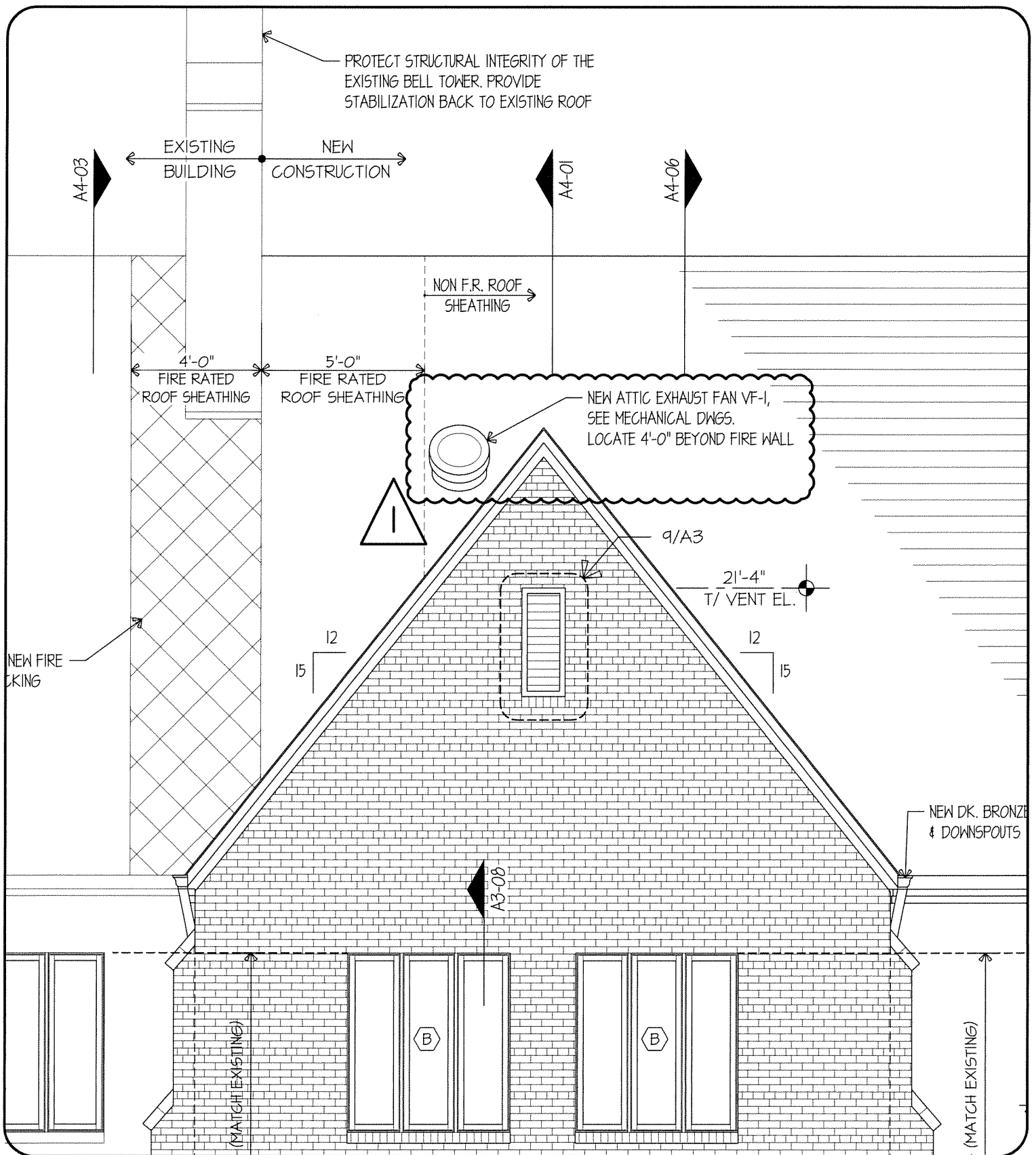
ADDENDUM No.2
BULLETIN DRAWING

LLZ _____
DRAWN BY
DSS _____
CHECKED BY
MAY 11, 2017 _____
DATE
S1527 _____
COMM. NO.

SHEET NO.

ABD2.1

OF



RAMSAY
BURGIN
SMITH
ARCHITECTS

225 NORTH MAIN STREET - SUITE 501
SALISBURY, NORTH CAROLINA 27344
Phone: (704) 633-3121 Fax: (704) 633-3161
Email: rbsa@rbsarch.com (www.rbsarch.com)

PUBLICATION OR REUSE OF THESE DRAWINGS
OR ANY DETAILS THEREFROM MUST BE WITH
THE WRITTEN CONSENT OF THE ARCHITECT

OLD ST. PAUL'S CHURCH NARTHEX ADDITION A3 Elevations

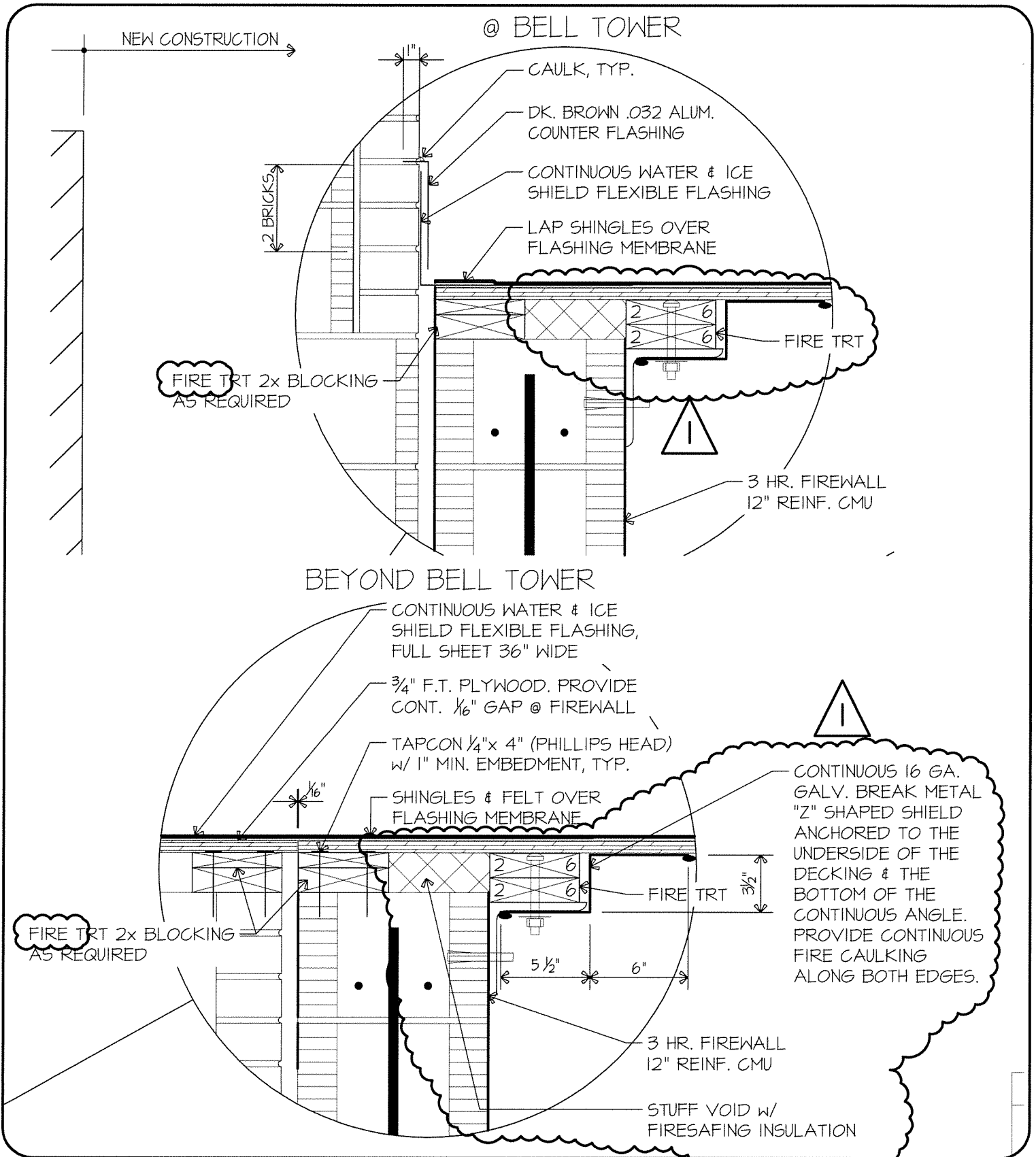
ADDENDUM No.2
BULLETIN DRAWING

LLS
DRAWN BY
DSS
CHECKED BY
MAY 11, 2017
DATE
S1527
COMM. NO.

SHEET NO.

ABD3.1

OF



RAMSAY
BURGIN
SMITH
ARCHITECTS

225 NORTH MAIN STREET - SUITE 501
SALISBURY, NORTH CAROLINA 28144
Phone: (704) 633-3121 Fax: (704) 633-5361
Email: rbsa@rbsarch.com (www.rbsarch.com)

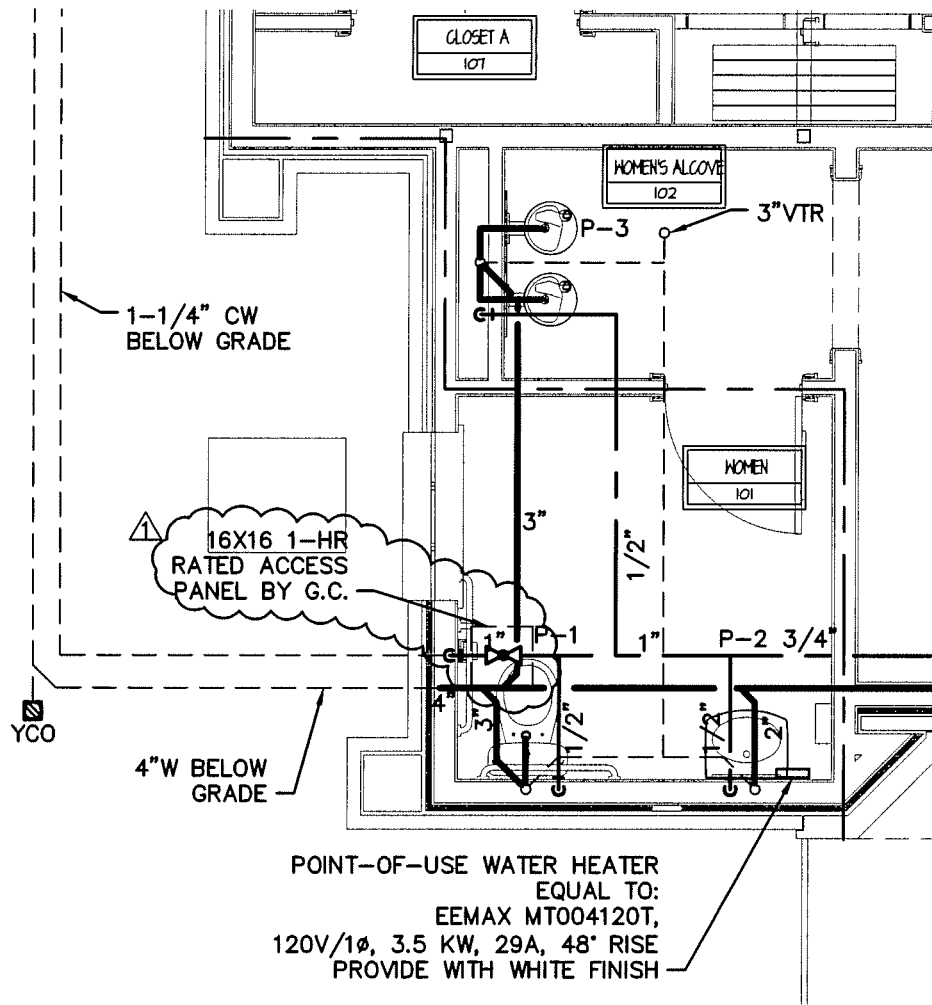
PUBLICATION OR REUSE OF THESE DRAWINGS
OR ANY DETAILS THEREFROM MUST BE WITH
THE WRITTEN CONSENT OF THE ARCHITECT

Old St. Paul's Church
Narthex Addition
A6 Wall Sections

ADDENDUM No.2
BULLETIN DRAWING

LLS _____
DRAWN BY
DSS _____
CHECKED BY
MAY 11, 2017 _____
DATE
S1527 _____
COMM. NO.

SHEET NO.
ABD4.
OF



1

 P1

 PARTIAL
 PLUMBING PLAN
 SCALE: 1/4" = 1'-0"

**RAMSAY
 BURGIN
 SMITH
 ARCHITECTS**

FOR NORTH MAN STREET - BULLETIN
 DRAWING (10/1/17) FROM 1/1/17 (10/1/17)
 PUBLICATION OR REUSE OF THESE DRAWINGS
 OR ANY DETAILS THEREFROM MUST BE WITH
 THE WRITTEN CONSENT OF THE ARCHITECT

**OLD ST. PAUL'S CHURCH
 NARTHEX ADDITION
 (dwg detail or sheet)**

**ADDENDUM #2
 BULLETIN DRAWING**

DGP
 DRAWN BY
 DGP
 CHECKED BY
 MAY 11, 2017
 DATE
 S1527
 COMM. NO.

SHEET NO.

PBD | .1

OF 2

**RAMSAY
BURGIN
SMITH
ARCHITECTS**

PUBLICATION OR REUSE OF THESE DRAWINGS OR ANY DETAILS THEREFROM MUST BE WITH THE WRITTEN CONSENT OF THE ARCHITECT

**OLD ST. PAUL'S CHURCH
NARTHEX ADDITION
(dwg detail or sheet)**

**ADDENDUM #2
BULLETIN DRAWING**

DGP
DRAWN BY
DGP
CHECKED BY
MAY 11, 2017
DATE
SCALE
CONS. NO.

SHEET NO.

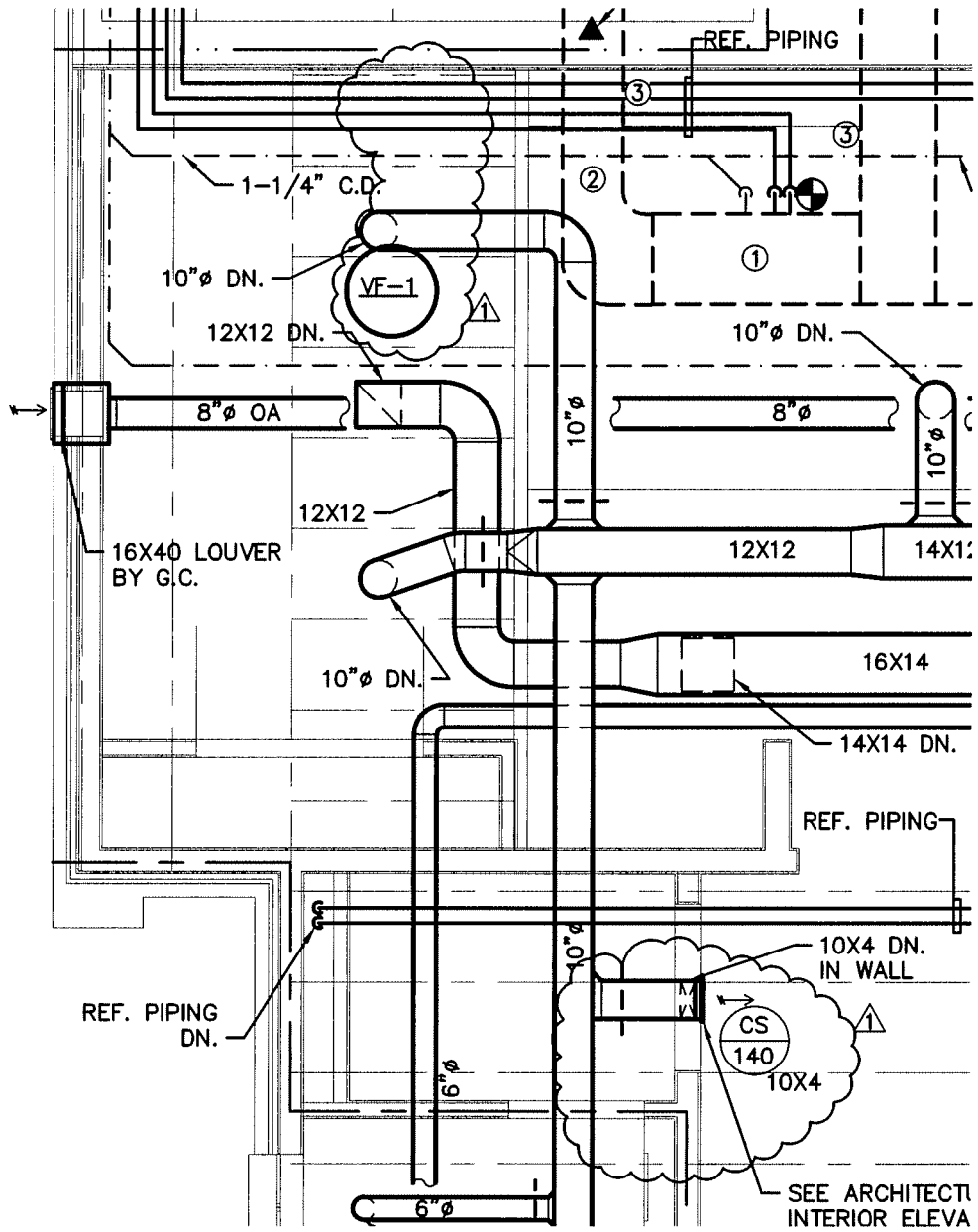
PBD | 2

OF 2

PLUMBING FIXTURE SCHEDULE

SYM	DESCRIPTION	CW	HW	W	V	MODEL NUMBER	REMARKS
P-1	WATER CLOSET (HDCP.)	1/2"	-	3"	2"	KOHLER "HIGHLINE" K-3979; BENEKE 527SS SEAT; K-7637 ANGLE SUPPLY	1,4,5,8
P-2	LAVATORY (WALL, GRID)	1/2"	1/2"	2"	2"	KOHLER "PINOIR" K-2035-4; SLOAN SF-2350-BDM FAUCET; K-7607 SUPPLY; K-8998 TRAP, K-7129-A DRAIN. PROVIDE COVER FOR DRAIN PIPE.	1,2,3,7,9
P-3	WATER COOLER	1/2"	-	2"	2"	ELKAY MODEL LRPBM28K; PROVIDE STOP & TRAP, STAINLESS STEEL FINISH.	1,6

- SEE ARCHITECTURAL PLANS FOR EXACT LOCATION AND MOUNTING HEIGHTS OF ALL FIXTURES.
- PROVIDE TRUEBRO MODEL 102 INSULATION KIT, PLUMBEREX MODEL PRO-2000 OR MCGUIRE PWV8902 PREWRAPPED CAST P-TRAP ASSEMBLY KIT ON ALL HANDICAP ACCESSIBLE LAVATORIES AND/OR SINKS.
- PROVIDE CARRIERS FOR ALL WALL MOUNTED FIXTURES.
FOR LAVATORIES: SINGLE HANGER FOR BLOCK WALLS; FOR GYPBOARD WALL, PROVIDE FLOOR-MOUNT ARM CARRIERS (CONCEALED OR EXPOSED PER MFR'S REQUIREMENTS).
- EQUAL CHINA FIXTURE BY AMERICAN STANDARD, OLSONITE & BENEKE.
- EQUAL TOILET SEAT BY BEMIS, OLSONITE & BENEKE.
- EQUAL WATER COOLER/DRINKING FOUNTAIN BY HALSEY TAYLOR, SUNROC, HAWS & OASIS.
- EQUAL CAST IRON LAVATORIES BY CECO & ZURN.
- FLUSH VALVE MECHANISM SHALL BE LOCATED OPPOSITE OF HAND RAIL AS PER ADA REQUIREMENT.
- EQUAL FAUCETS BY SYMMONS; CHICAGO FAUCETS, DELTA, MOEN & AMERICAN STANDARD.



5
M1

**PARTIAL ATTIC
 PLAN — NEW**
 SCALE: 1/4" = 1'-0"

**RAMSAY
 BURGIN
 SMITH
 ARCHITECTS**

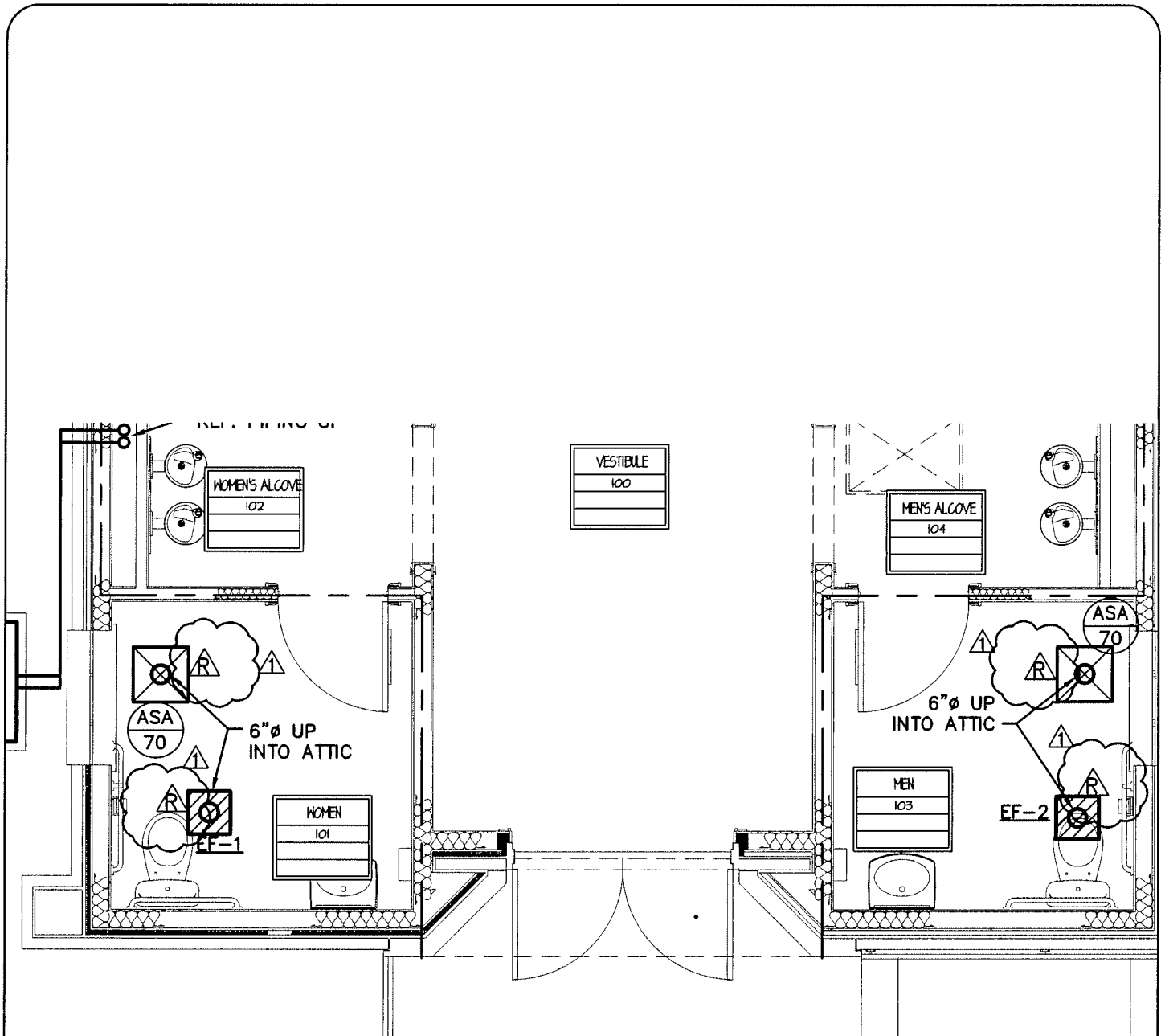
FOR NORTH MAIN STREET - BATTLE MOUNTAIN
 BATTLE MOUNTAIN, MISSISSIPPI (304) 888-8888
 PUBLICATION OR REUSE OF THESE DRAWINGS
 OR ANY DETAILS THEREFROM MUST BE WITH
 THE WRITTEN CONSENT OF THE ARCHITECT

**OLD ST. PAUL'S CHURCH
 NARTHEX ADDITION
 (dwg detail or sheet)**

**ADDENDUM #2
 BULLETIN DRAWING**

DGP _____
 DRAWN BY
DGP _____
 CHECKED BY
MAY 11, 2017 _____
 DATE
9827 _____
 COMM. NO.

SHEET NO.
MBD | .1
 OF **3**



2

M1
PARTIAL NEW FLOOR PLAN
 SCALE: 1/4" = 1'-0"

**RAMSAY
 BURGIN
 SMITH
 ARCHITECTS**

FOR NORTH MAIN STREET - BURLINGAME
 (415) 339-1111 Fax (415) 339-1122
 www.ramsayburginsmith.com

 PUBLICATION OR REUSE OF THESE DRAWINGS
 OR ANY DETAILS THEREFROM MUST BE WITH
 THE WRITTEN CONSENT OF THE ARCHITECT

OLD ST. PAUL'S CHURCH
NARTHEX ADDITION
 (dwg detail or sheet)

ADDENDUM #2
BULLETIN DRAWING

DGP _____
 DRAWN BY
DGP _____
 CHECKED BY
 MAY 11, 2017
 DATE
51527 _____
 COMM. NO.

SHEET NO.
MBD | 2
 OF **3**

Electrical Data (Outdoor Unit)											Remarks
F	Fan		Compressor			Volts	Phase	MCA	MOCP	Model	
	No.	FLA	No.	LRA	RLA						
	1	0.77	1	67.8	12.8	208	1	17	25	4TWR4030	1 - 4



THE 'R4' IN THE MODEL NUMBER INDICATES THAT THE UNIT IS 14 SEER.



FAN SCHEDULE

Unit Tag	CFM	ESP (in.)	Fan RPM	Sones (dBA)	Drive	W	Volts	Phs	Type	Model No.	Rmks.
EF-1	75	0.35	765	1.5	DIRECT	80	115	1	C	SP-B110	1 - 7
EF-2	75	0.35	765	1.5	DIRECT	80	115	1	C	SP-B110	1 - 7



1. MODELS BY GREENHECK. EQUALS BY PENN, ILG, LOREN COOK.
2. TYPES: C = CEILING
3. SOLID STATE SPEED CONTROL SW. ON FAN OR NEARBY.
4. VERIFY FAN INLET/OUTLET SIZE, TRANSITION TO FIRST DUCT SIZE IF NECESSARY.
5. DISCONNECT SWITCH (OR PLUG) BY MFGR. FOR ALL SINGLE PHASE MOTORS (U.N.O.).
6. INTERLOCK WITH LIGHT SWITCH.
7. PROVIDE WITH RADIATION DAMPER.

6. INTERLOCK WITH LIGHT SWITCH.



**RAMSAY
BURGIN
SMITH
ARCHITECTS**

PUBLICATION OR REUSE OF THESE DRAWINGS OR ANY DETAILS THEREFROM MUST BE WITH THE WRITTEN CONSENT OF THE ARCHITECT

**OLD ST. PAUL'S CHURCH
NARTHEX ADDITION
(dwg detail or sheet)**

ADDENDUM #2
BULLETIN DRAWING

DGP _____
DRAWN BY
DGP _____
CHECKED BY
MAY 11, 2017
DATE
SIS27 _____
COMM. NO.

SHEET NO.
MBD1.3
OF 3