

GENERAL NOTES

- 1. MECHANICAL CONTRACTOR (M.C.) SHALL INSTALL MANUAL VOLUME DAMPERS AT BRANCH DUCTS AND AS SHOWN IN BRANCH DUCT DETAILS.

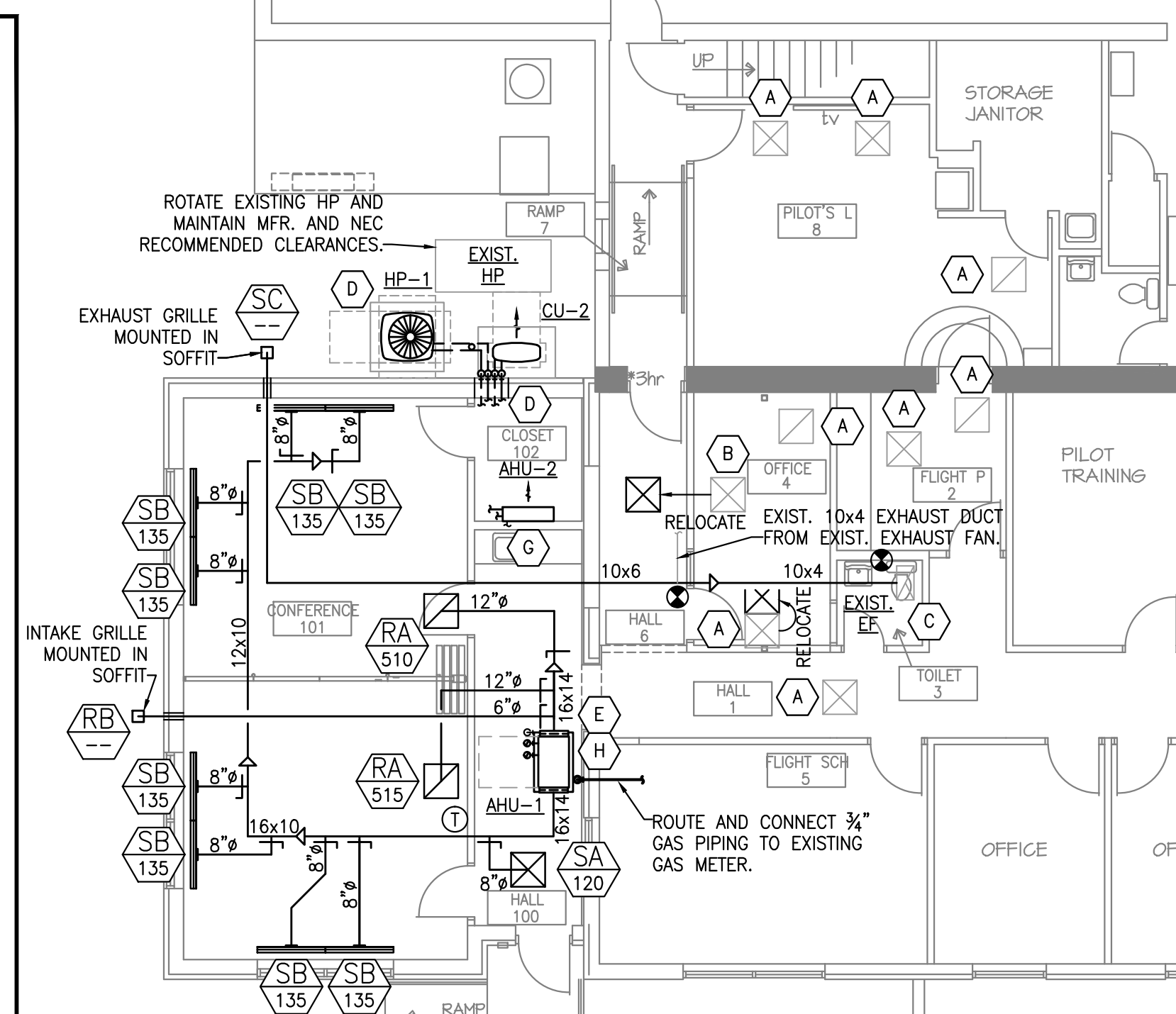
LEGEND

- Supply Air Diffuser (square symbol with X)
Return Air Diffuser (square symbol with circle)
Exhaust Air Diffuser (square symbol with circle and X)
Manual Volume Damper (line with damper symbol)
Grille Type - See Schedule
Air Quantity - CFM

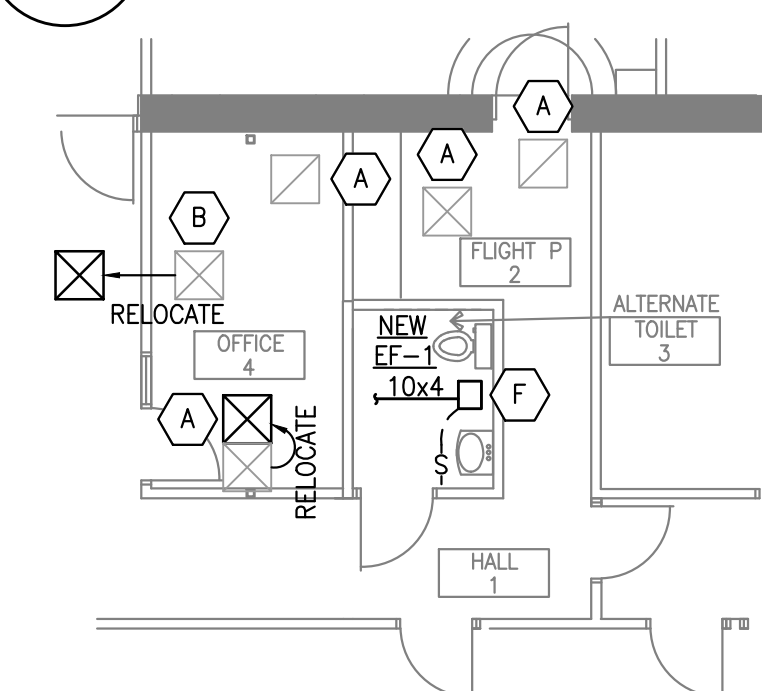
KEY NOTES

- A EXISTING SUPPLY/RETURN DIFFUSERS TO REMAIN. ADJUST AS NEEDED TO NEW REFLECTED CEILING PLAN.
B RELOCATE EXISTING SUPPLY DIFFUSER AND RECONNECT TO EXISTING SUPPLY DUCT.
C EXISTING EXHAUST FAN TO REMAIN. DEMOLISH EXISTING EXHAUST DUCT. CONNECT NEW EXHAUST DUCT TO NEW EXHAUST DISCHARGE IN SOFFIT.

MECHANICAL SYSTEMS, SERVICE SYSTEMS AND EQUIPMENT:
Method of Compliance: Prescriptive Yes Performance Energy Cost Budget
Thermal Zone: ZONE 3A
R-Value U-Value
Roof/Ceiling: 38 0.026
Ext. Walls: 19 0.053



1 HVAC FLOOR PLAN SCALE: 1/8" = 1'-0"



2 ALTERNATE HALL 1, FLIGHT P 2, TOILET 3 AND OFFICE 4 HVAC FLOOR PLAN SCALE: 1/8" = 1'-0"

MINIMUM OUTDOOR AIR REQUIREMENTS (NCSBC MECHANICAL 2012)

Table with columns: EQUIPMENT ID, ROOM NAME AND ROOM NUMBER, OCCUPANCY CLASSIFICATION, AREA SQFT., PEOPLE PER PERSON, AREA CFM/SQ FT., DENSITY CFM/SQFT., MAXIMUM OCCUPANCY REQ., TOTAL O.A. CFM, MINIMUM TOTAL O.A. PROVIDED.

HVAC DESIGN DATA

Table with columns: PROJECT, LOCATION, DRY BULB, WET BULB, % HUMIDITY (SUMMER/WINTER).

FULL-LOAD MINIMUM EFFICIENCIES OF ENERGY EFFICIENT MOTORS

Table with columns: HP, OPEN MOTORS (2-POLE, 4-POLE, 6-POLE), ENCLOSED MOTORS (2-POLE, 4-POLE, 6-POLE).

FOR SINGLE-SPEED POLYPHASE MOTORS MINIMUM ACCEPTABLE NOMINAL FULL-LOAD EFFICIENCY

REFRIGERANT PIPING SIZES

Table with columns: TAG, EQUIPMENT SERVED, NOM. TONS, EQUIVALENT LENGTH (ft), LIQUID LINE, SUCTION LINE, HOT GAS.

- NOTES: 1. ALL REFRIGERANT PIPING SHALL BE NITROGENIZED ACR COPPER TUBING. 2. TUBING SIZES SCHEDULED ARE O.D. TYPE L COPPER.

GRILLE AND DIFFUSER SCHEDULE

Table with columns: MARK, MFR, PRICE, MODEL, NECK SIZE (IN.), FACE, FINISH, CONSTRUCTION, ACCESSORIES.

- NOTES: 1. ACCEPTABLE ALTERNATE MANUFACTURERS - METAL-AIRE, NAILOR, CARNES AND TITUS.

MINI-SPLIT AIR HANDLING UNIT SCHEDULE (COOLING ONLY)

Table with columns: EQUIPMENT NUMBER, MODEL NUMBER, CFM, MOTOR POWER, REFRIG., MIN. TOTAL MBH, MIN. SENSIBLE MBH, ENTERING AIR, LEAVING AIR, SAT. SUCT. TEMP., MAX. COIL FACE VELOCITY, MIN. COIL FPI/ROWS, COIL TYPE, VOLTS/PHASE/CYCLES, MOC, MCA, UNIT WEIGHT LB.

- NOTES: 1. AIR HANDLING UNIT IS BASED ON DAIKIN, MITSUBISHI AND LG ARE APPROVED EQUALS. 2. FAN MOTORS SHALL BE ODP AND ENERGY EFFICIENT.

MINI-SPLIT CONDENSING UNIT SCHEDULE (COOLING ONLY)

Table with columns: EQUIPMENT NUMBER, MODEL NUMBER, REFRIG., NO. OF COMPRESSORS, TOTAL CAP. MBH, SENSIBLE CAP. MBH, UNIT SEER, NO. OF REFRIG. CIRCUITS, SAT. SUCT. TEMP., DESIGN AMBIENT AIR, UNIT CAP. TONS, COND. QTY., FANS QTY., MOC, MCA, COND. UNIT VOLTAGE, REFRIG. PIPE CONN. (O.D.), LIQUID LINE, SUCTION LINE, UNIT WEIGHT LB.

- NOTES: 1. INFORMATION PROVIDED IS BASED ON DAIKIN, MITSUBISHI AND LG ARE APPROVED EQUALS. 2. PROVIDE 5-YEAR EXTENDED WARRANTY ON COMPRESSORS FOR PARTS.

FAN SCHEDULE

Table with columns: EQUIPMENT NUMBER, MFR., LOCATION, MODEL, SERVICE, CFM, E.S.P. IN. W.G., FAN RPM, MTR RPM, MTR POWER, ELECTRICAL VOLTS/PHASE/CYCLES, FLA, WEIGHT, SONES, dBA.

- NOTES: 1. EXHAUST FAN INFORMATION IS BASED UPON GREENHECK. PENN AND COOK ARE APPROVED EQUALS. 2. PROVIDE FACTORY MOUNTED AND WIRED DISCONNECT AND BACKDRAFT DAMPERS.

HEAT PUMP SCHEDULE

Table with columns: EQUIPMENT NUMBER, MFR., MODEL NUMBER, REFRIG., NO. OF COMPRESSORS, TOTAL CAP. MBH, SENSIBLE CAP. MBH, UNIT SEER, NO. OF REFRIG. CIRCUITS, SAT. SUCT. TEMP., DESIGN AMBIENT AIR, UNIT CAP. TONS, COND. QTY., FANS QTY., MOC, MCA, COND. UNIT VOLTAGE, REFRIG. PIPE CONN. (O.D.), LIQUID LINE, SUCTION LINE, UNIT WEIGHT LB.

- NOTES: 1. INFORMATION PROVIDED IS BASED ON JCI, DAIKIN AND CARRIER ARE APPROVED EQUALS. 2. PROVIDE 5-YEAR EXTENDED WARRANTY ON COMPRESSORS FOR PARTS.

DUAL FUEL AIR HANDLING UNIT WITH HI EFFICIENCY HEAT PUMP COIL AND GAS FURNACE SCHEDULE

Table with columns: EQUIPMENT NUMBER, MFR., MODEL NUMBER, MIN. CFM O.A.B, E.S.P. IN. W.G., MIN. MOTOR POWER/HP, REFRIG., MIN. TOTAL MBH, MIN. SENSIBLE MBH, ENTERING AIR, LEAVING AIR, SAT. SUCT. TEMP., MAX. COIL FACE VELOCITY, MIN. COIL FPI/ROWS, COIL TYPE, AMBIENT AIR TEMP, ENTERING AIR TEMP, LEAVING AIR TEMP, BTUH GAS, HEAT PUMP HEAT @ 14°F, ELECTRICAL POWER, UNIT WEIGHT LB.

- NOTES: 1. AIR HANDLING UNITS ARE BASED ON JCI, CARRIER AND GOODMAN ARE APPROVED EQUALS. 2. FAN MOTORS SHALL BE ODP AND ENERGY EFFICIENT, TWO SPEED.

RAMSAY BURGIN SMITH ARCHITECTS
225 NORTH MAIN STREET - SUITE 501
SALISBURY, NORTH CAROLINA 28144

S. E. COLLINS CONSULTING ENGINEERS
1817 E. Innes St., Suite 201
Salisbury, NC 28146

1817 E. Innes St., Suite 201
Salisbury, NC 28146
E-mail: scollins@scollinseng.com
Fax: (704) 638-6337
Tel: (704) 638-6340

MECHANICAL HVAC FLOOR PLAN AND SCHEDULES

Table with columns: NO., REVISION, REVISED AHU-1 TO A 3.0 TON DUAL FUEL SYSTEM, 5/16/17

ROWAN COUNTY AIRPORT

TERMINAL EXPANSION

Circular professional engineering seals for S. E. COLLINS CONSULTING ENGINEERS, INC. and RAMSAY BURGIN SMITH ARCHITECTS.

PAD DRAWN BY: SEC CHECKED BY: APRIL 10, 2017 DATE OF SHEET NO. 11.1 OF 3