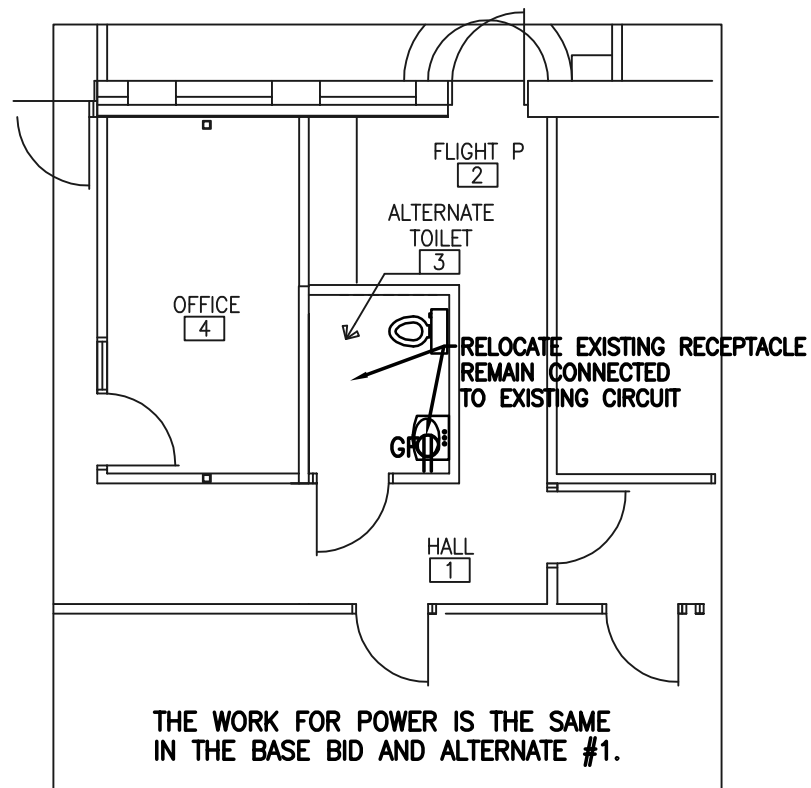
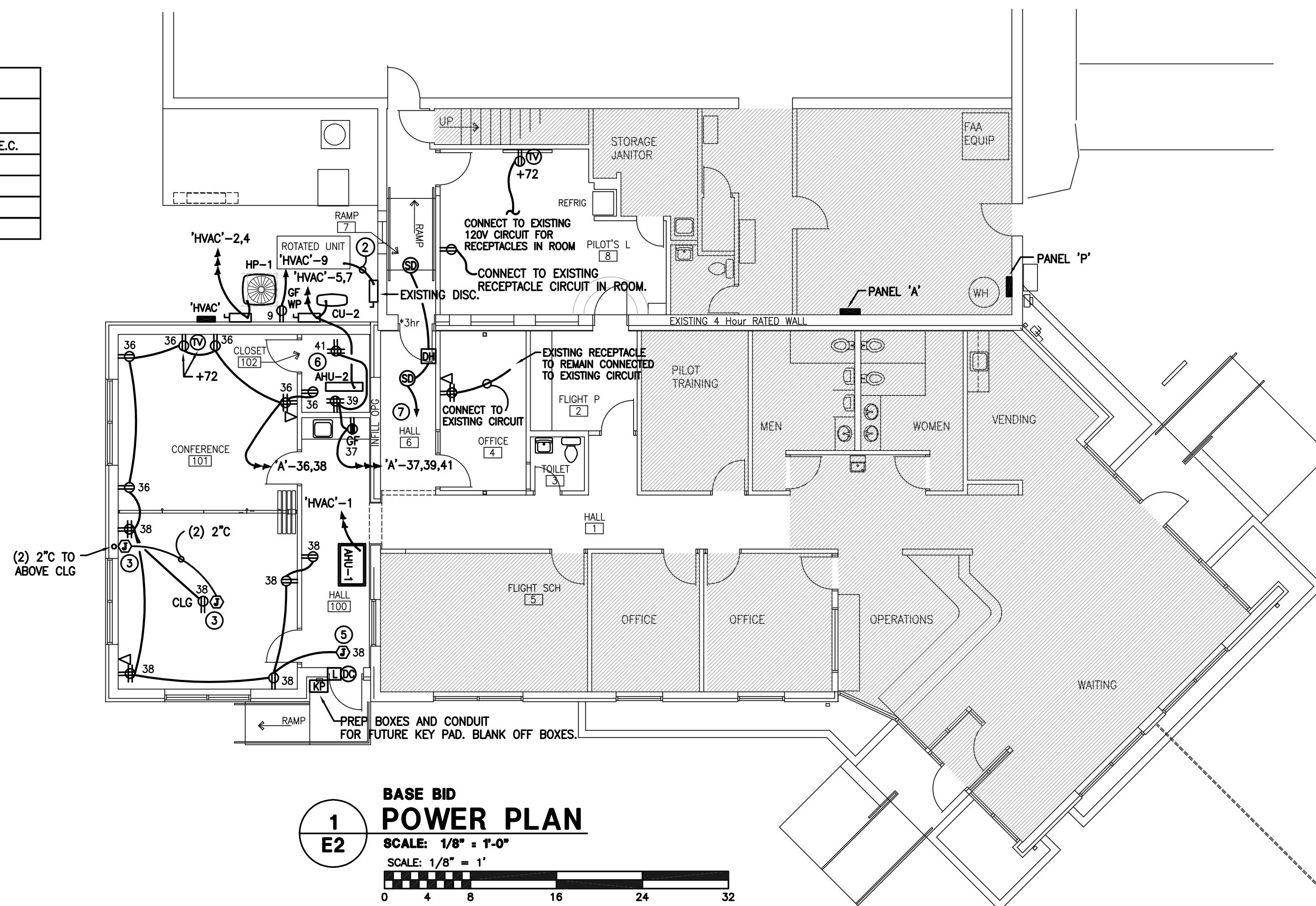


ELECTRICAL DISCONNECT SCHEDULE						
UNIT	FLA	MCA	MOCP	POWER V/P/Hz	DISCONNECT	NOTES
EF-1 (ALTERNATE # 1)	0.7			115/1/60	FACTORY INSTALLED DISCONNECT	CONTROLLED BY WALL SWITCH BY E.C.
AHU-1		11	15	120/1/60	FACTORY INSTALLED DISCONNECT	SINGLE POINT POWER CONNECTION
CU-2		15.0	20	208/1/60	30 AMP HD NEMA 3R FUSED DISCONNECT BY E.C.	
AHU-2		POWER SUPPLIED FROM CU-2			FACTORY INSTALLED DISCONNECT	SINGLE POINT POWER CONNECTION
HP-1		12.9	20	208/3/60	30 AMP HD NEMA 3R FUSED DISCONNECT BY E.C.	

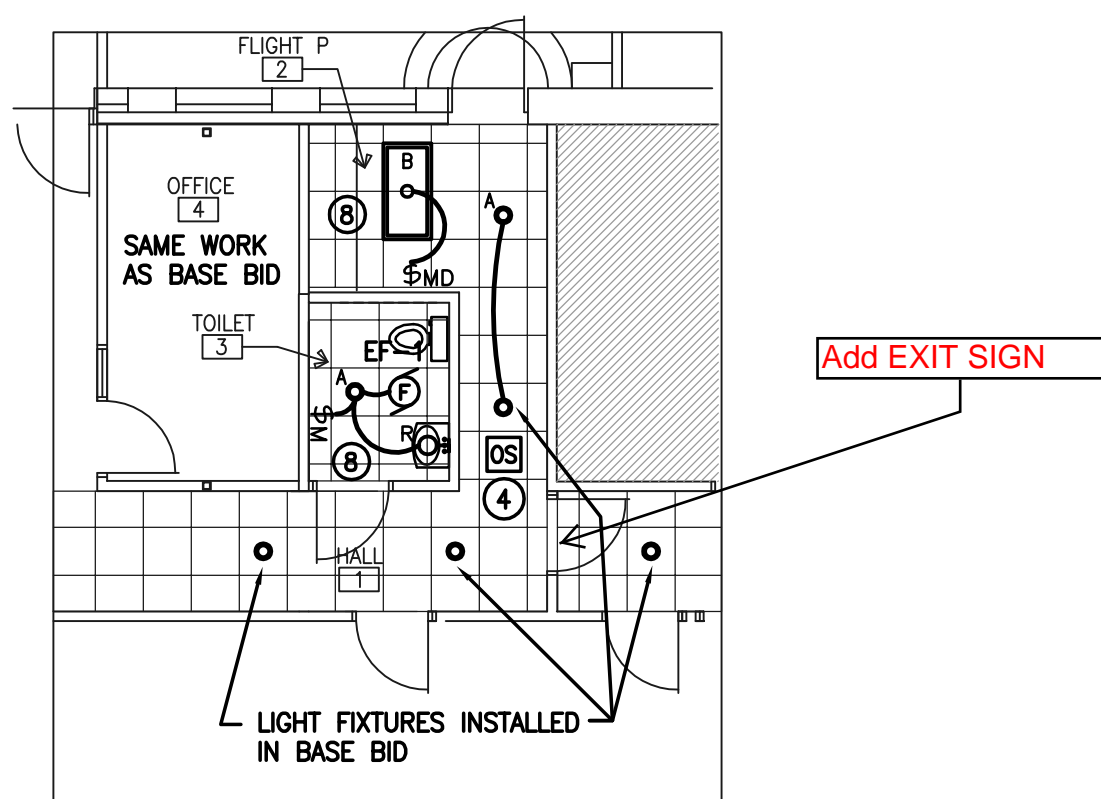


2 ALTERNATE #1 POWER PLAN
SCALE: 1/8" = 1'-0"
SCALE: 1/8" = 1'

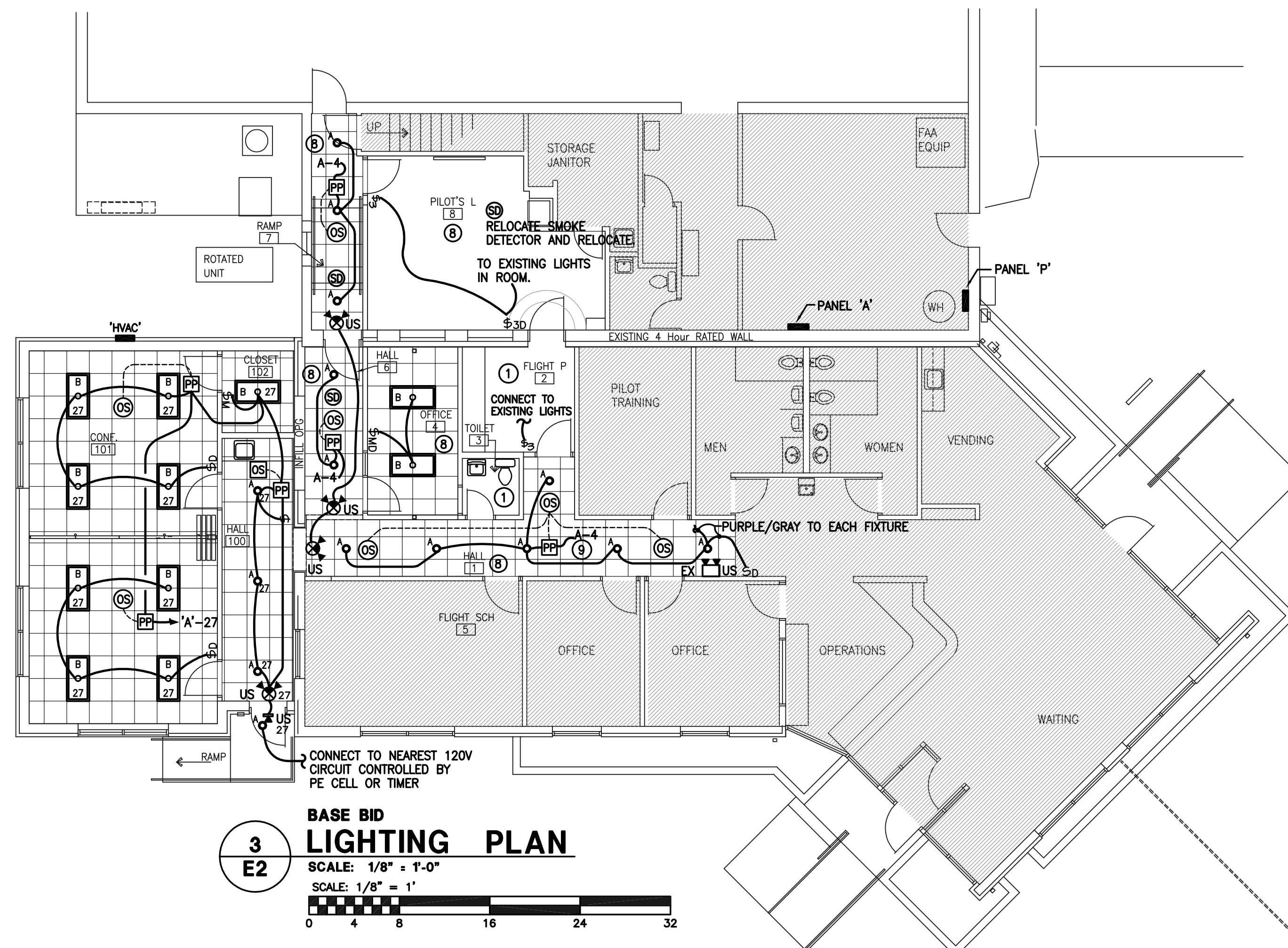


1 BASE BID POWER PLAN
SCALE: 1/8" = 1'-0"
SCALE: 1/8" = 1'

- NOTES: (AS INDICATED ON THIS PLAN BY A NUMBER IN A ○)
- EXISTING LIGHT FIXTURES AND CEILING IN ROOM TO REMAIN UNCHANGED.
 - INSTALL NEW FLEX FROM THE EXISTING DISCONNECT TO THE ROTATED HVAC UNIT. MATCH EXISTING FLEX.
 - CEILING MOUNTED JUNCTION BOX FOR DATA FOR CEILING MOUNTED PROJECTOR AND WALL MOUNTED JUNCTION BOX FOR PROJECTOR CONTROLS. RUN TWO 1.5" CONDUITS WITH PULL CORD BETWEEN JUNCTION BOXES. VERIFY DISTANCE OF PROJECTOR FROM SCREEN PRIOR TO INSTALLATION.
 - FOR ALTERNATE #1 INSTALL HALLWAY TYPE OCCUPANCY SENSOR AT THIS LOCATION.
 - JUNCTION BOX FOR POWER TO ELECTRIC STRIKE MOUNTED ABOVE LAY-IN CEILING.
 - AHU-2 IS WALL MOUNTED - SHOWN OFFSET FOR CLARITY. VERIFY LOCATION OF ALL MECHANICAL EQUIPMENT WITH THE MECHANICAL DRAWINGS.
 - INSTALL SMOKE DETECTORS WITHIN FIVE FEET OF DOOR ON EITHER SIDE. CONNECT TO DOOR HOLDER - DOOR HOLDER TO RELEASE ON SIGNAL FROM SMOKE DETECTORS. PROVIDE 120VAC POWER FROM CIRCUIT 'A'-32.
 - CONNECT LIGHTS IN ROOM OR HALL TO THE EXISTING LIGHTING CIRCUIT IN THE AREA. E.C. SHALL PRESERVE THE EXISTING LIGHTING CIRCUITS DURING DEMOLITION OF THE EXISTING LIGHT FIXTURES.
 - CONNECT POWER PACKS IN HALL 1, HALL 6, AND RAMP 7 TO DIMMER SO ALL LIGHTS ARE DIMMED AT SAME TIME. PURPLE/GRAY 0-10 DIMMING. CONNECT POWER PACKS TO A-4.
- GENERAL CONSTRUCTION NOTE:
- 1). THE EXISTING RECEPTACLES IN THE EXISTING BUILDING AREA BEING RENOVATED ARE TO REMAIN. MAINTAIN THE EXISTING POWER CIRCUIT CONNECTION TO THE EXISTING RECEPTACLES.



4 ALTERNATE #1 LIGHTING PLAN
SCALE: 1/8" = 1'-0"
SCALE: 1/8" = 1'



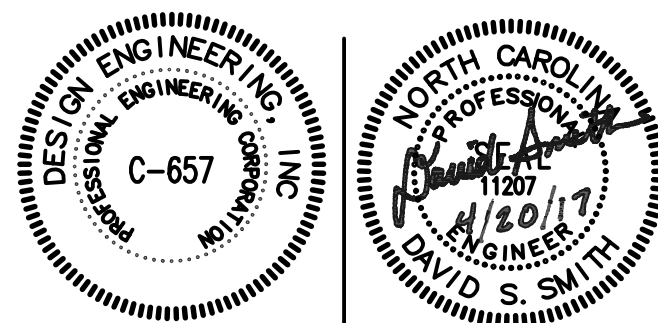
3 BASE BID LIGHTING PLAN
SCALE: 1/8" = 1'-0"
SCALE: 1/8" = 1'

POWER & LIGHTING

2198 East Holly Grove Road
P.O. Box 1256
Lexington, N.C. 27293
Design Engineering, Inc. 336/224-0100
336/224-0099 (fax)

ROWAN COUNTY AIRPORT TERMINAL EXPANSION

REVISED DRAWING



MCB
DRAWN BY
DSS
CHECKED BY
APRIL 2017
DATE

SHEET NO.
E2
OF 4